

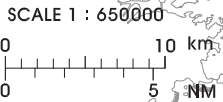
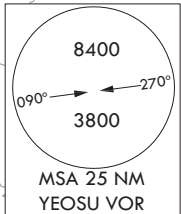
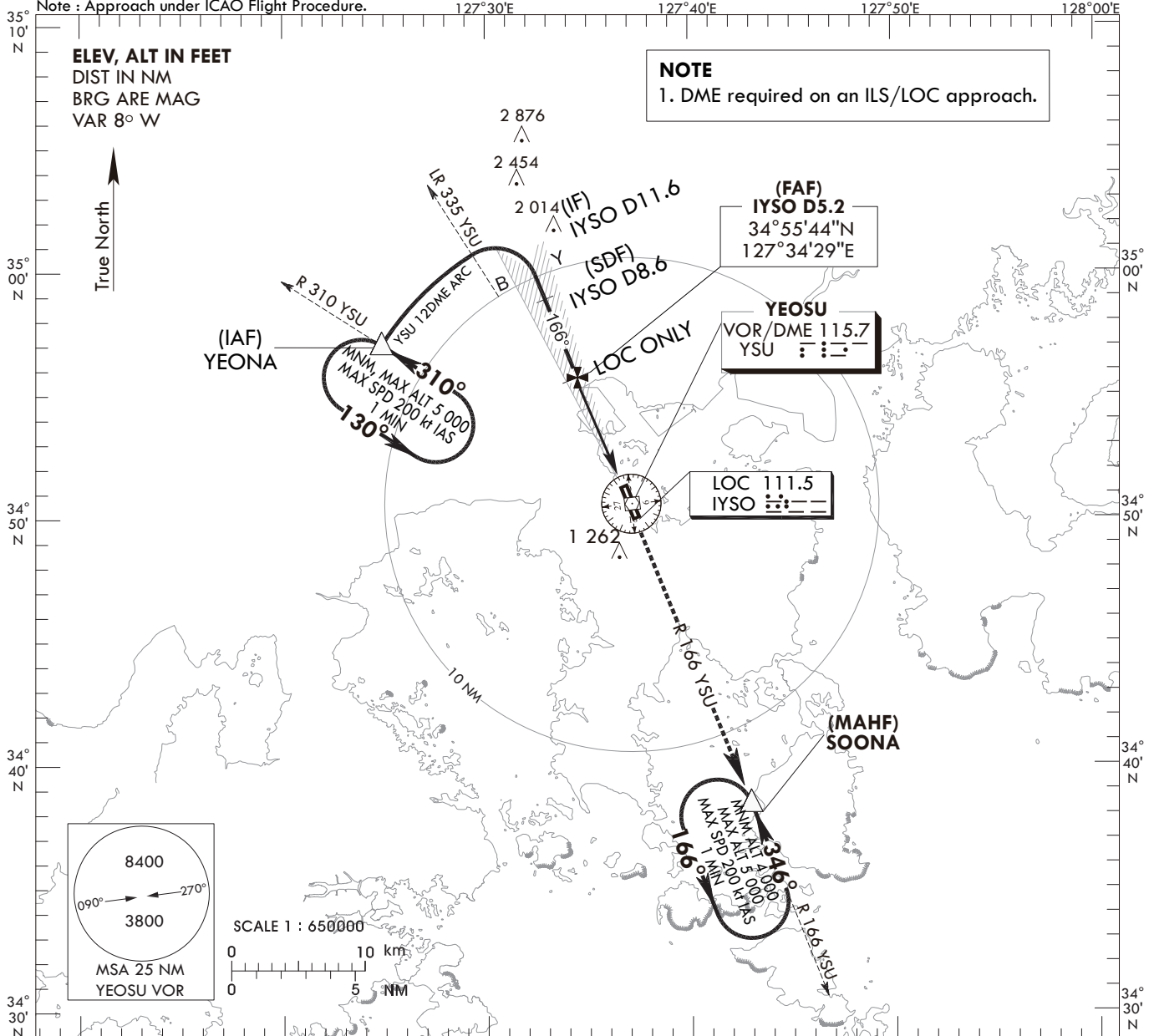
INSTRUMENT APPROACH CHART - ICAO

AERODROME ELEV 53 ft
HEIGHTS RELATED TO
THR RWY 17-ELEV 28 ft

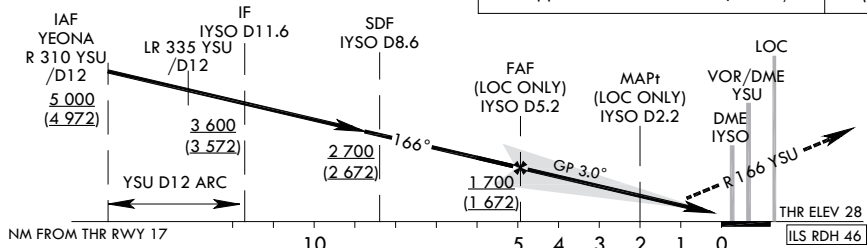
SACHEON APP 135.4
YEOSU TWR 122.5
240.9

YEOSU/Yeosu (RKJY)
ILS or LOC Y RWY 17

Note : Approach under ICAO Flight Procedure.



RECOMMENDED PROFILE(LOC ONLY)	DME IYSO	5	4	3	2.1
Final Approach Gradient 5.31%, 323 ft/NM	ALT(HGT)	1 644 (1 616)	1 321 (1 293)	998 (970)	740 (712)



TRANSITION ALT 14 000
TRANSITION LVL FL 140

CATEGORY	DA(DH)/MDA(MDH)	A	B	C	D	MISSED APPROACH							
						Climb to R 166 YSU to SOONA and Hold at 4 000 ft							
STA	CAT-1 (CG 2.5%)	FULL	351 (323)	1 000 m			Rate of descent	Knots	60	90	120	150	180
		ALS INOP	(323)	1 700 m									
	CAT-1 (CG 5.0%)	FULL	228 (200)	RVR 550 m VIS 800m			V/V fpm	318	478	637	796	955	
		ALS INOP	(200)	1 200 m									
LOC (CG 2.5%)	FULL	910 (882)	3 300 m			* Timing Not authorized for defining MAPt. * Circling Not authorized.							
	ALS INOP	(882)	4 000 m										
LOC (CG 5.0%)	FULL	740 (712)	3 200 m										
	ALS INOP	(712)	3 900 m										

Change : Amended radial format.

YEOSU/Yeosu (RKJY)
 ILS or LOC Y RWY 17

AERONAUTICAL DATA TABULATION

ILS/LOC Approach to RWY 17 from YEONA			
Fix/point		Coordinates	
YEONA(IAF)	R 310 YSU /12.00 NM YSU	34°57'03.8"N	127°24'52.1"E
D11.6 IYSO (IF)	BRG 165.50°/11.60 NM IYSO	35°01'41.4"N	127°31'33.6"E
D8.6 IYSO (SDF)	BRG 165.51°/8.60 NM IYSO	34°58'54.5"N	127°32'55.7"E
D5.2 IYSO (FAP)	BRG 165.52°/5.17 NM IYSO	34°55'44.1"N	127°34'29.3"E
D2.2 IYSO (MAPt LOC ONLY)	BRG 165.52°/2.20 NM IYSO	34°52' 58.5"N	127°35' 50.6"E
THR RWY 17		34°51'03.73"N	127°36'46.77"E
IYSO DME		34°50'57.3"N	127°36'54.6"E
YSU VOR/DME		34°50'34.2"N	127°37'08.2"E
IYSO LOC		34°49'52.0"N	127°37'21.9"E
SOONA	BRG 165.96°/13.00 NM YSU	34°38'27.5"N	127°42'56.0"E

Change : Amended coordinate format.

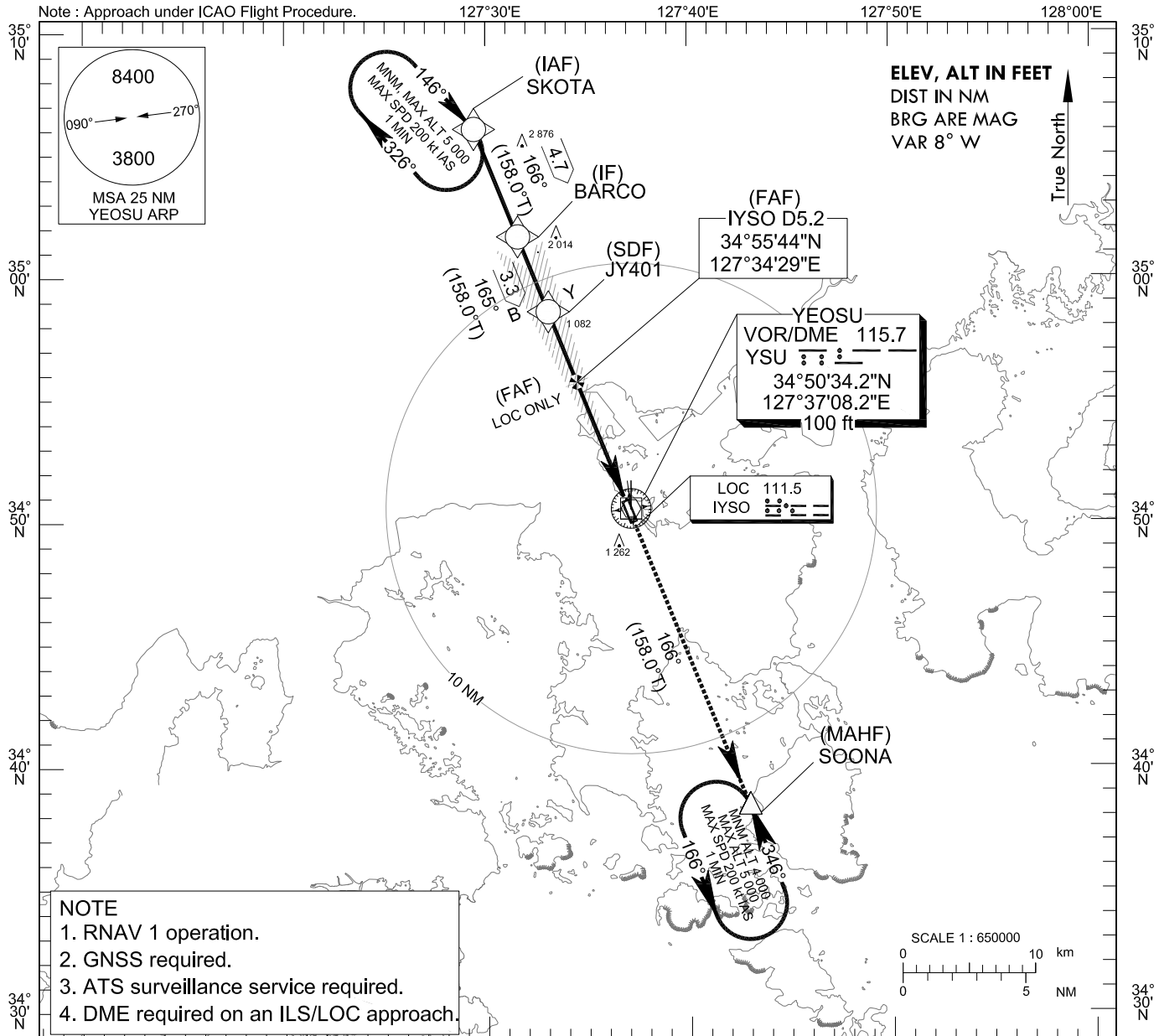
**INSTRUMENT
APPROACH
CHART - ICAO**

AERODROME ELEV 53 ft
HEIGHTS REALTED TO
THR RWY 17 - ELEV 28 ft

SACHEON APP 135.4
YEOSU TWR 122.5
240.9

YEOSU/Yeosu (RKJY)
ILS or LOC Z RWY 17

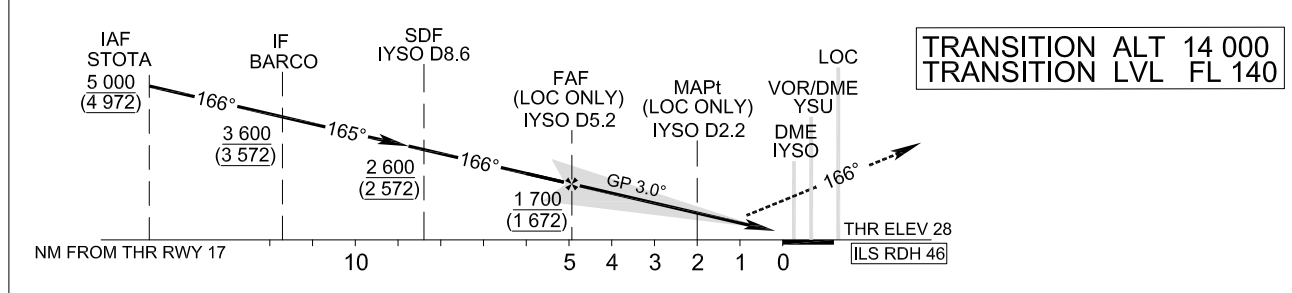
Note : Approach under ICAO Flight Procedure.



NOTE
1. RNAV 1 operation.
2. GNSS required.
3. ATS surveillance service required.
4. DME required on an ILS/LOC approach.

RECOMMENDED PROFILE(LOC ONLY)	DME IYSO	5	4	3	2.1
Final Approach Gradient 5.31%, 323 ft ft/NM	ALT(HGT)	1 644 (1 616)	1 321 (1 293)	998 (970)	740 (712)

MISSED APPROACH
Climb to 4 000 ft on track of 166° to SOONA.



CATEGORY		DA(DH)/MDA(MDH)	A	B	C	D	Knots						
STA	CAT-1 (CG 2.5%)	FULL	351	1 000 m				Rate of descent V/V fpm	60	90	120	150	180
		ALS INOP	(323)	1 700 m									
	CAT-1 (CG 5.0%)	FULL	228	RVR 550 m, VIS 800 m									
		ALS INOP	(200)	1 200 m									
	LOC (CG 2.5%)	FULL	910 (882)	3 300 m									
		ALS INOP		4 000 m									
LOC (CG 5.0%)	FULL	740 (712)	3 200 m										
	ALS INOP		3 900 m										

* Timing Not authorized for defining MAPt.
* Circling Not authorized.

Change : Amended coordinate format.

YEOSU/Yeosu (RKJY)
 ILS or LOC Z RWY 17

AERONAUTICAL DATA TABULATION

ILS/LOC Approach to RWY 17 from YEONA		Coordinates	
Fix/point		Coordinates	
SKOTA (IAF)		35°06'04.9"N	127°29'24.2"E
BARCO (IF)		35°01'41.4"N	127°31'33.6"E
JY401 (SDF)		34°58'37.8"N	127°33'04.0"E
D5.2 IYSO (FAP)	BRG 165.52°/5.17 NM IYSO	34°55'44.1"N	127°34'29.3"E
D2.2 IYSO (MAP† LOC ONLY)	BRG 165.52°/2.20 NM IYSO	34°52' 58.5"N	127°35' 50.6"E
THR RWY 17		34°51'03.73"N	127°36'46.77"E
IYSO DME		34°50'57.3"N	127°36'54.6"E
YSU VOR/DME		34°50'34.2"N	127°37'08.2"E
IYSO LOC		34°49'52.0"N	127°37'21.9"E
SOONA		34°38'27.5"N	127°42'56.0"E

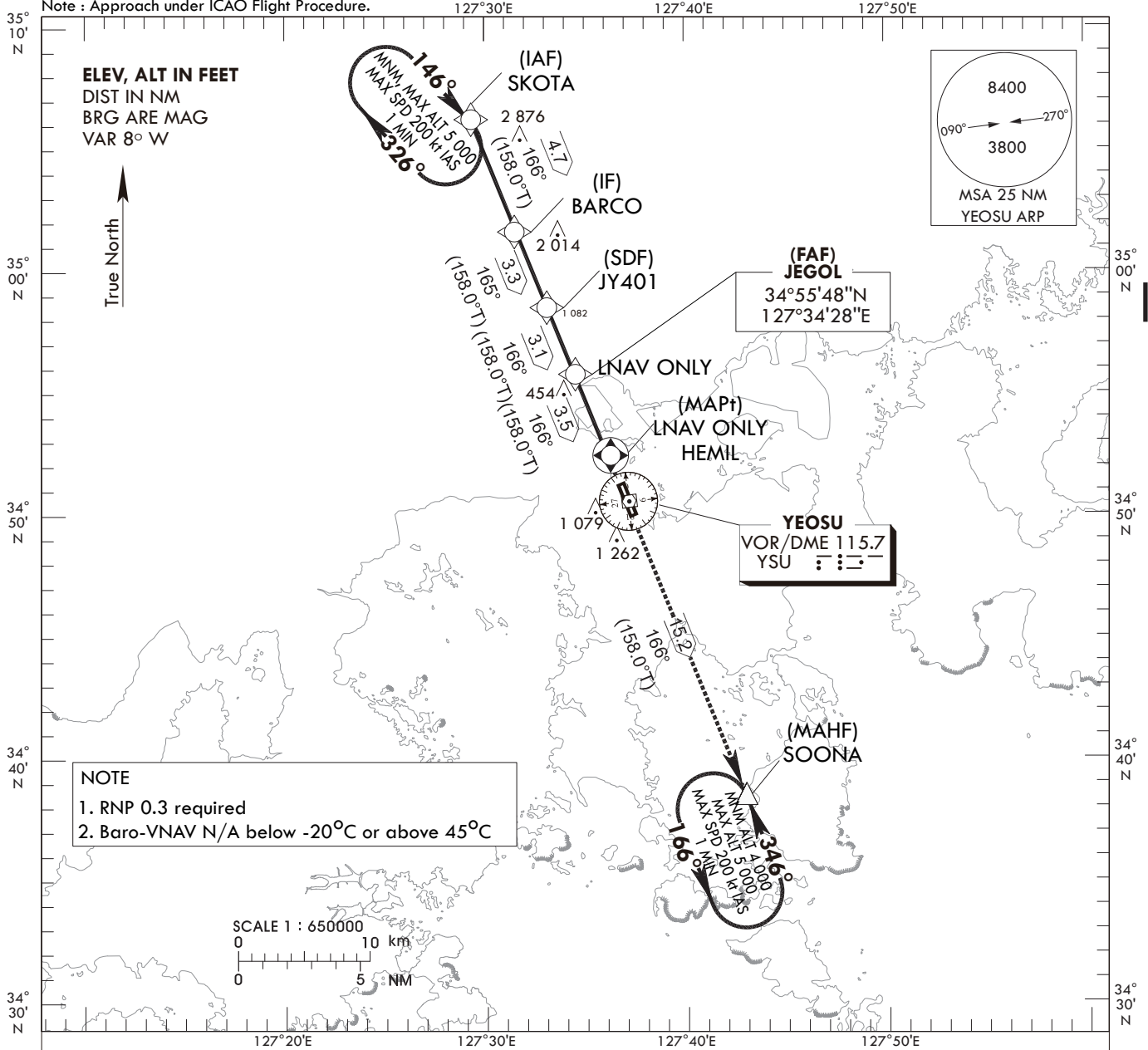
Change : Amended coordinate format.

INSTRUMENT APPROACH CHART - ICAO
AERODROME ELEV 53 ft
HEIGHTS RELATED TO THR RWY 17-ELEV 28 ft

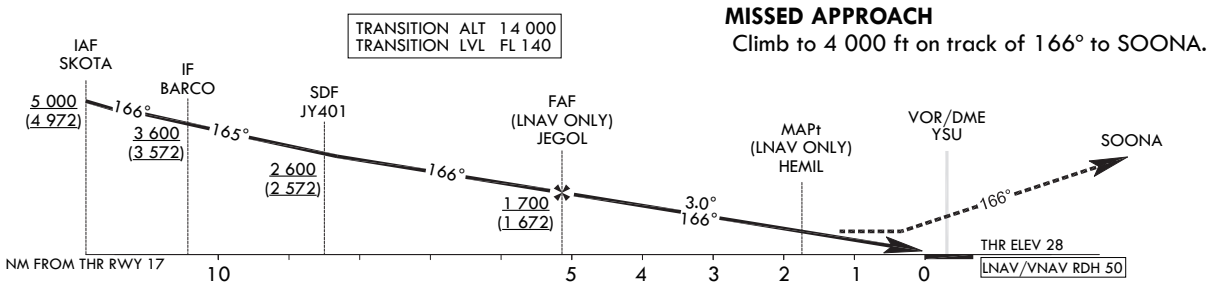
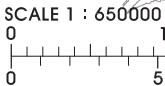
SACHEON	APP	135.4
YEOSU	TWR	122.5 240.9

YEOSU/Yeosu (RKJY)
RNAV(GNSS) RWY 17

Note : Approach under ICAO Flight Procedure.



NOTE
 1. RNP 0.3 required
 2. Baro-VNAV N/A below -20°C or above 45°C



CATEGORY	DA(DH)/MDA(MDH)	A	B	C	D	Knots					
						60	90	120	150	180	
STA	LNAV/VNAV	FULL	910	3 300 m							
		ALS INOP	(882)	4 000 m							
	LNAV	FULL	1 040	4 100 m							
		ALS INOP	(1 012)	4 900 m							

Rate of descent V/V fpm 319 478 637 796 956
 * Timing Not authorized for defining MAPt.
 * Circling Not authorized.

Change : Amended coordinate format.

YEOSU/Yeosu (RKJY)
RNAV(GNSS) RWY 17
HOLDING PROCEDURE

AERONAUTICAL DATA TABULATION

Instrument Approach Procedure Coding Tables

RNAV(GNSS) RWY 17

Serial Number	Path Descriptor	Waypoint Identifier	Fly-over	Course/Track °M(°T)	Distance (NM)	Turn direction	Altitude (ft)	Speed (kt)	Coordinates	VPA/RDH	Navigation specification	Remarks
001	IF	SKOTA	-	-	-	-	+5 000	-	35°06'04.9"N 127°29'24.2"E	-	RNP APCH	IAF
002	TF	BARCO	-	166(158.0)	4.7	-	+3 600	-	35°01'41.4"N 127°31'33.6"E	-	RNP APCH	IF
003	TF	JY401	-	165(158.0)	3.3	-	+2 600	-	34°58'37.8"N 127°33'04.0"E	-	RNP APCH	SDF
004	TF	JEGOL	-	166(158.0)	3.1	-	+1 700	-	34°55'47.5"N 127°34'27.6"E	-	RNP APCH	FAF
005	TF	HEMIL	Y	166(158.0)	3.5	-	+1 040	-	34°52'32.9"N 127°36'03.1"E	-3.00/50	RNP APCH	MAPt
006	TF	SOONA	Y	166(158.0)	15.2	-	-	-	34°38'27.5"N 127°42'56.0"E	-	RNP APCH	-
007	HM	SOONA	Y	346(338.5)	-	L	-4 000 +5 000	-200	34°38'27.5"N 127°42'56.0"E	-	RNP APCH	1 min (Outbound timing)

HOLDING PROCEDURE

Holding Identification	Path Descriptor	Waypoint Identifier	Fly-over	Course/Track °M(°T)	Time (min)	Turn direction	Altitude (ft)	Speed (kt)	Coordinates	VPA/RDH	Navigation specification	Remarks
RNAV(GNSS) RWY 17	HM	SKOTA	Y	146(138.0)	1	R	@5 000	-200	35°06'04.9"N 127°29'24.2"E	-	RNAV 1	-

Change : Amended coordinate format.

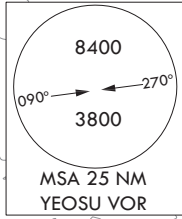
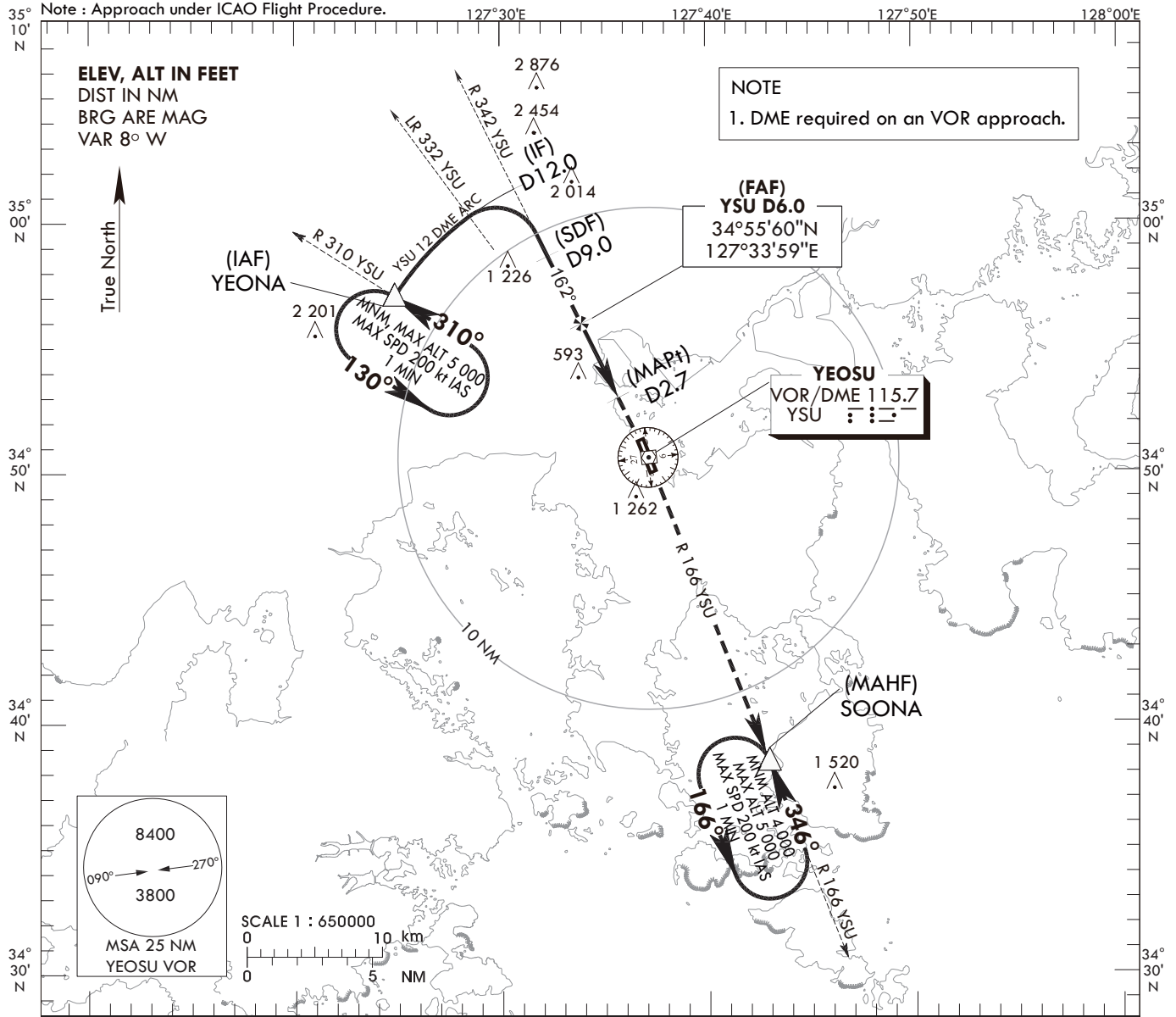
INSTRUMENT APPROACH CHART - ICAO

AERODROME ELEV **53** ft
HEIGHTS RELATED TO
THR RWY 17-ELEV **28** ft

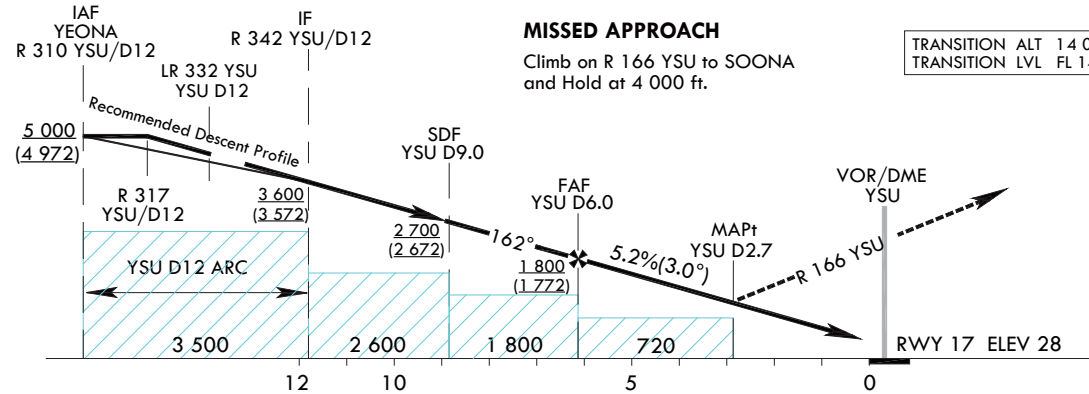
SACHEON	APP	135.4
YEOSU	TWR	122.5
		240.9

YEOSU/Yeosu (RKJY)
VOR RWY 17

Note : Approach under ICAO Flight Procedure.



RECOMMENDED PROFILE	DME YSU	5	4	3	2.7
Final Approach Gradient 5.22%, 317 ft/NM	ALT(HGT)	1 483 (1 455)	1 166 (1 138)	849 (821)	760 (732)



CATEGORY	DA(DH)/MDA(MDH)	A	B	C	D	Knots					
						60	90	120	150	180	
STA (CG 2.5%)	FULL	900 (872)		3 300 m							
	ALS INOP			4 000 m							
STA (CG 5.0%)	FULL	740 (712)		3 300 m							
	ALS INOP			4 000 m							

* Timing Not authorized for defining MAPt.
* Circling Not authorized.

YEOSU/Yeosu (RKJY)
 VOR RWY 17

AERONAUTICAL DATA TABULATION

VOR Approach to RWY17 from YEONA			
Fix/point		Coordinates	
YEONA(IAF)	- R 310 YSU/12.00 NM YSU	34°57'03.8"N	127°24'52.1"E
D12 YSU(IF)	- BRG 161.94°/12.00 NM YSU	35°01'24.8"N	127°30'50.3"E
D9 YSU(SDF)	- BRG 161.96°/9.00 NM YSU	34°58'42.2"N	127°32'24.9"E
D6 YSU(FAF)	- BRG 161.97°/6.00 NM YSU	34°55'59.5"N	127°33'59.4"E
D2.7 YSU(MAPt)	- BRG 161.99°/2.70 NM YSU	34°53'00.6"N	127°35'43.3"E
THR RWY 17		34°51'03.73"N	127°36'46.77"E
YSU VOR/DME		34°50'34.2"N	127°37'08.2"E
SOONA	- BRG 165.96°/13.00 NM YSU	34°38'27.5"N	127°42'56.0"E

Change : Amended coordinate format.

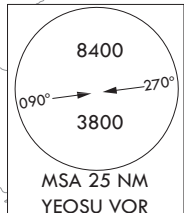
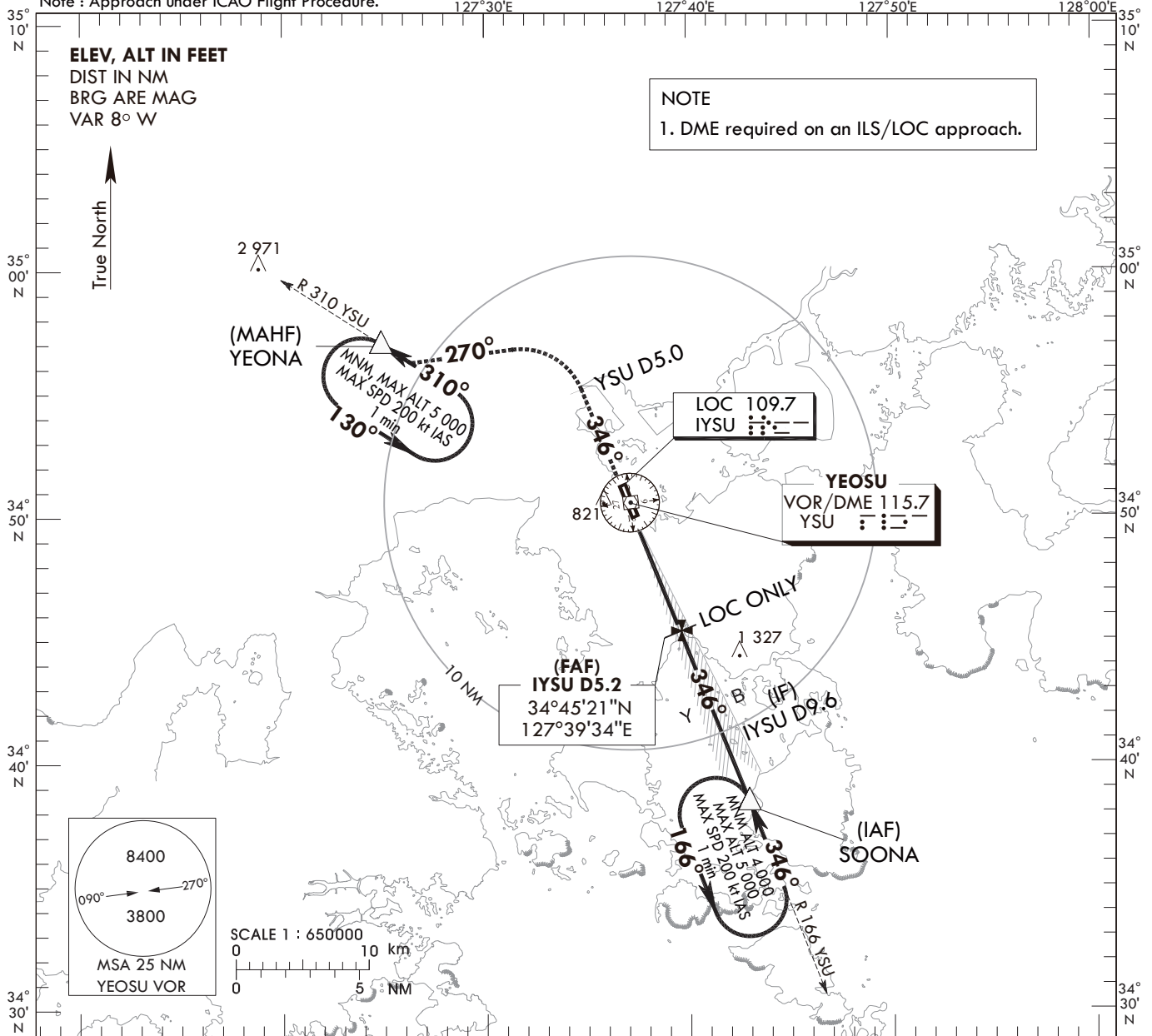
INSTRUMENT APPROACH CHART - ICAO

AERODROME ELEV 53 ft
HEIGHTS RELATED TO
THR RWY 35-ELEV 31 ft

SACHEON APP 135.4
YEOSU TWR 122.5
240.9

YEOSU/Yeosu (RKJY)
ILS or LOC Y RWY 35

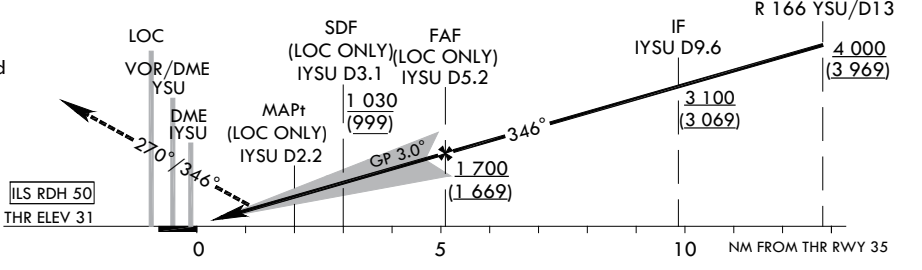
Note : Approach under ICAO Flight Procedure.



RECOMMENDED PROFILE(LOC ONLY)	DME IYSU	5	4	3	2.5	127°40'E	127°50'E
Final Approach Gradient 5.31%, 323 ft/NM	ALT(HGT)	1 646 (1 615)	1 323 (1 292)	1 001 (970)	850 (819)	TRANSITION ALT 14 000	TRANSITION LVL FL 140

MISSED APPROACH
Climb straight ahead to YSU 5 DME,
Then turn LEFT HDG 270° to intercept and
Climb on R 310 YSU to YEONA and Hold
at 5 000 ft.

*When conducting ILS 2.5% and LOC 2.5%
missed APCH, missed APCH turn limited to
210 kt IAS maximum.



CATEGORY	DA(DH)/MDA(MDH)	A				B				C				D					
		A		B		A		B		A		B		A		B			
STA	CAT-1 (CG 2.5%)	FULL	465		1 900 m		Knots		60		90		120		150		180		
		ALS INOP	(434)		2 300 m		Rate of descent		V/V fpm		318		478		637		796		955
	CAT-1 (CG 5.0%)	FULL	234		750 m														
		ALS INOP	(203)		1 200 m														
LOC (CG 2.5%)	FULL	850		3 400 m															
	ALS INOP	(819)		3 800 m															

* Timing Not authorized for defining MAPt.
* Circling Not authorized.

YEOSU/Yeosu (RKJY)
 ILS or LOC Y RWY 35

AERONAUTICAL DATA TABULATION

ILS/LOC Approach to RWY 35 from SOONA		
Fix/point		Coordinates
SOONA (IAF)	R 165 YSU /13.00 NM YSU	34°38'27.5"N 127°42'56.0"E
D9.6 IYSU (IF)	BRG 345.61°/9.58 NM IYSU	34°41'14.7"N 127°41'34.5"E
D5.2 IYSU (FAP)	BRG 345.59°/5.17 NM IYSU	34°45'21.2"N 127°39'34.2"E
D3.1 IYSU (SDF LOC ONLY)	BRG 345.59°/3.10 NM IYSU	34°47'16.2"N 127°38'38.0"E
D2.2 IYSU (MAPt LOC ONLY)	BRG 345.59°/2.20 NM IYSU	34°48'06.4"N 127°38'13.5"E
THR RWY 35		34°50'00.53"N 127°37'17.70"E
IYSU DME		34°50'10.5"N 127°37'18.1"E
YSU VOR/DME		34°50'34.2"N 127°37'08.2"E
IYSU LOC		34°51'13.0"N 127°36'42.2"E
D5 YSU	BRG 345.59°/5.00 NM YSU	34°55'10.9"N 127°34'45.7"E
YEONA	BRG 270.30°/12.00 NM YSU	34°57'03.8"N 127°24'52.1"E

Change : Amended coordinate format.

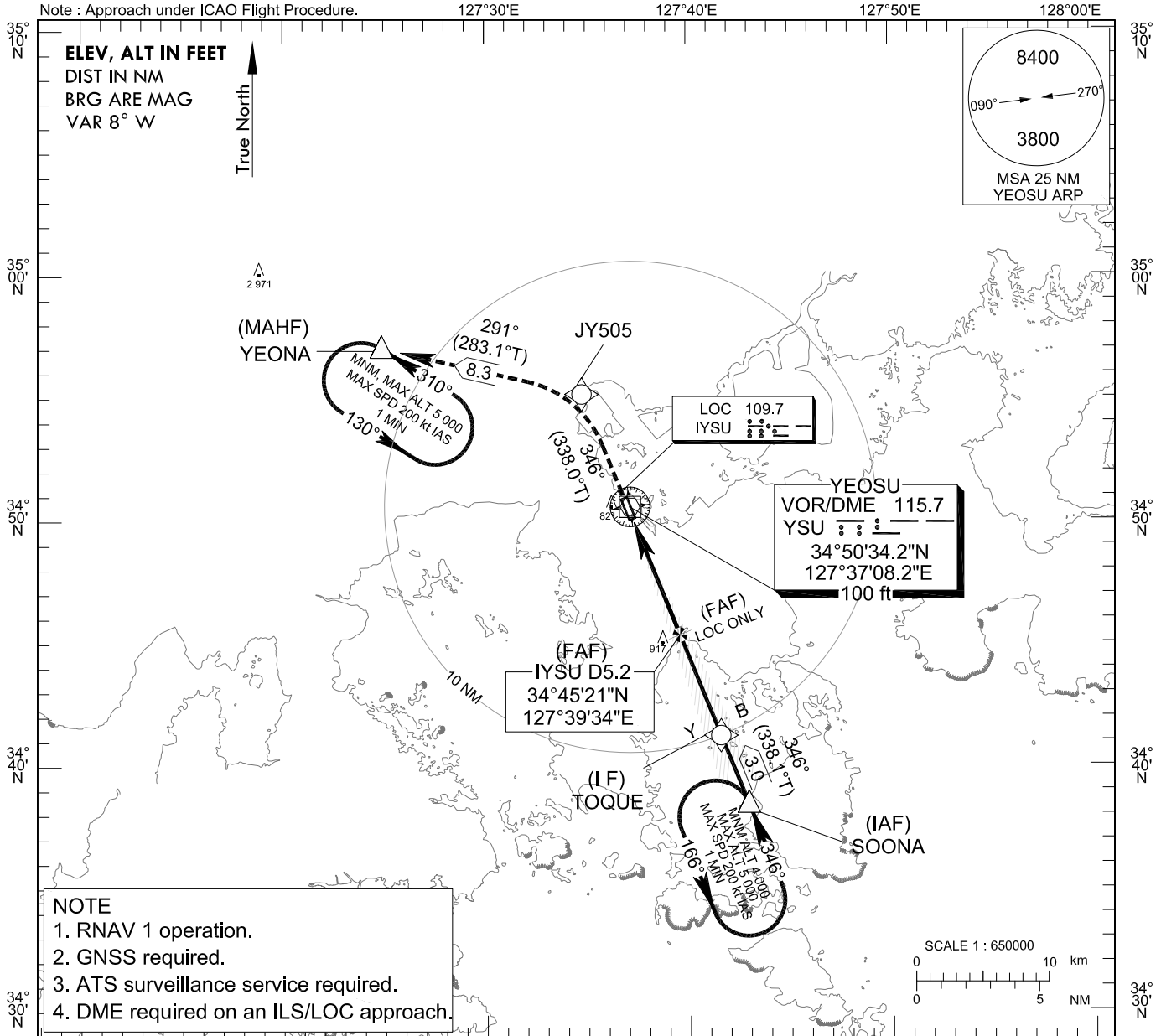
**INSTRUMENT
APPROACH
CHART - ICAO**

AERODROME ELEV 53 ft
HEIGHTS REALTED TO
THR RWY 35 - ELEV 31 ft

SACHEON	APP	135.4
YEOSU	TWR	122.5
		240.9

YEOSU/Yeosu (RKJY)
ILS or LOC Z RWY 35

Note : Approach under ICAO Flight Procedure.



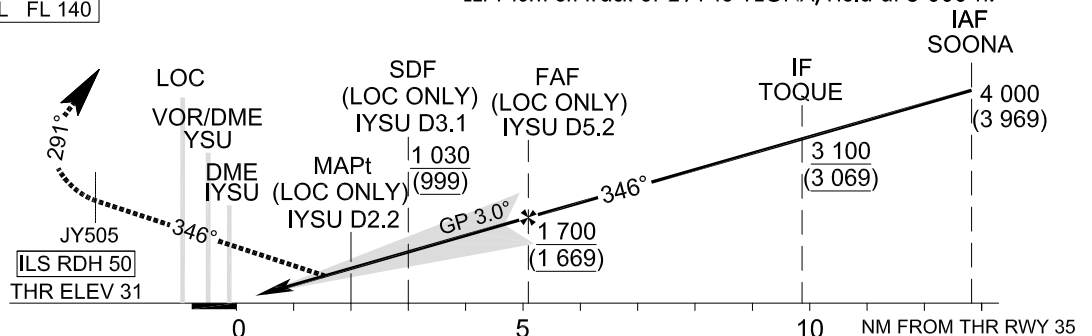
- NOTE**
1. RNAV 1 operation.
 2. GNSS required.
 3. ATS surveillance service required.
 4. DME required on an ILS/LOC approach.

RECOMMENDED PROFILE(LOC ONLY)	DME IYSU	5	4	3	2.5
Final Approach Gradient 5.31%, 323 ft/NM	ALT(HGT)	1 646 (1 615)	1 323 (1 292)	1 001 (970)	850 (819)

TRANSITION ALT 14 000
TRANSITION LVL FL 140

MISSED APPROACH

Climb at 5 000 ft on track of 346° to JY505,
LEFT turn on track of 291 to YEONA, Hold at 5 000 ft.



CATEGORY	DA(DH)/MDA(MDH)	A				B				C				D										
		Knots		V/V fpm		Knots		V/V fpm		Knots		V/V fpm		Knots		V/V fpm								
STA	CAT-1 (CG 2.5%)	FULL	465 (434)		1 900 m		750m		1 200 m		3 400 m		3 800 m		60		90		120		150		180	
		ALS INOP	234 (203)		750m		1 200 m		3 400 m		3 800 m		318		478		637		796		955			
	CAT-1 (CG 5.0%)	FULL	850 (819)		3 400 m		3 800 m																	
		ALS INOP																						

Change : Amended coordinate format.

YEOSU/Yeosu (RKJY)
 ILS or LOC Z RWY 35

AERONAUTICAL DATA TABULATION

ILS/LOC Approach to RWY 35 from SOONA		
Fix/point		Coordinates
SOONA(IAF)		34°38'27.5"N 127°42'56.0"E
TOQUE(IF)		34°41'14.7"N 127°41'34.5"E
D5.2 IYSU (FAP)	BRG 345.59°/5.17 NM IYSU	34°45'21.2"N 127°39'34.2"E
D3.1 IYSU (SDF LOC ONLY)	BRG 345.59°/3.10 NM IYSU	34°47'16.2"N 127°38'38.0"E
D2.2 IYSU (MAPt LOC ONLY)	BRG 345.59°/2.20 NM IYSU	34°48'06.4"N 127°38'13.5"E
THR RWY 35		34°50'00.53"N 127°37'17.70"E
IYSU DME		34°50'10.5"N 127°37'18.1"E
YSU VOR/DME		34°50'34.2"N 127°37'08.2"E
IYSU LOC		34°51'13.0"N 127°36'42.2"E
JY505		34°55'10.9"N 127°34'45.7"E
YEONA		34°57'03.8"N 127°24'52.1"E

Change : Amended coordinate format.

INSTRUMENT APPROACH CHART - ICAO

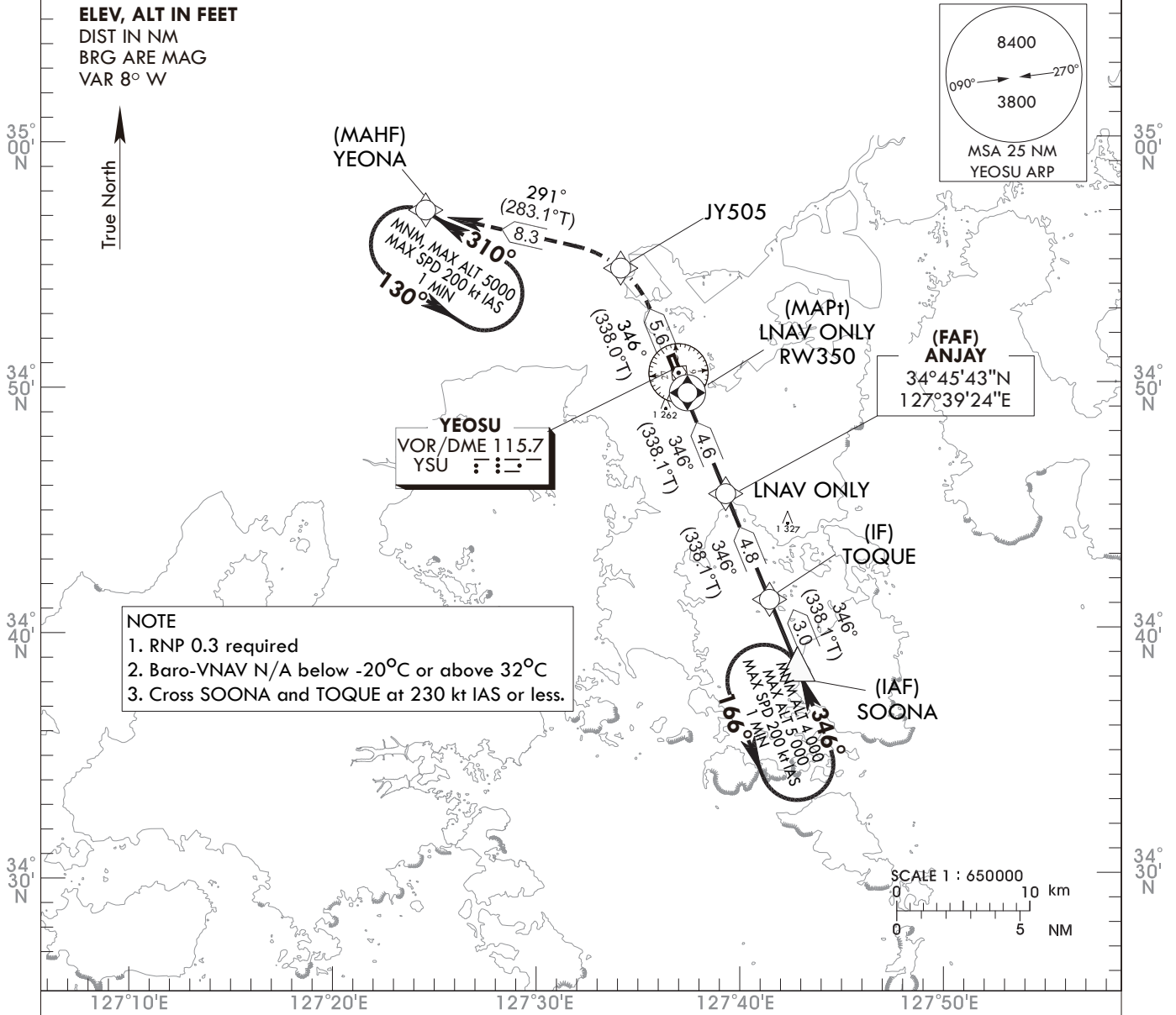
AERODROME ELEV 53 ft
HEIGHTS RELATED TO
THR RWY 35-ELEV 31 ft

SACHEON	APP	135.4
YEOSU	TWR	122.5
		240.9

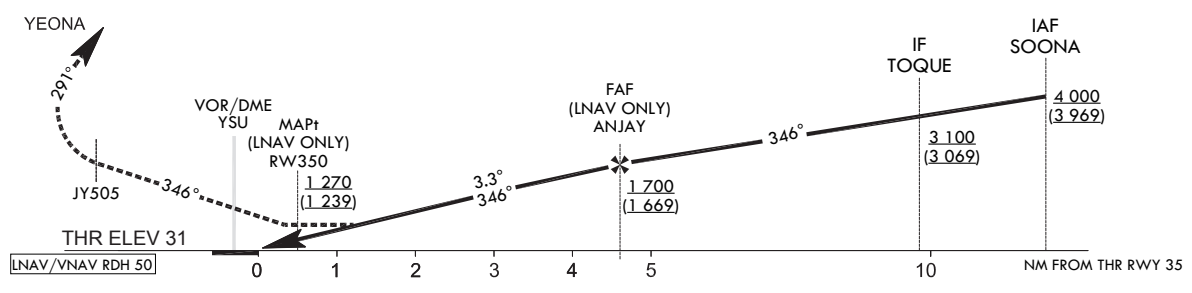
YEOSU/Jeosu (RKJY)
RNAV(GNSS) RWY 35

Note : Approach under ICAO Flight Procedure.

127°30'E 127°40'E 127°50'E



MISSED APPROACH
TRANSITION ALT 14 000
TRANSITION LVL FL 140
Climb to 5 000 ft on track of 346° to JY505, LEFT turn on track of 291° to YEONA.



CATEGORY	DA(DH)/MDA(MDH)	A	B	C	D	Knots					
						60	90	120	150	180	
STA	LNNAV/VNAV	FULL	1 070	4 400 m		Rate of descent V/V fpm	350	525	700	875	1 050
		ALS INOP	(1 039)	4 900 m							
	LNNAV	FULL	1 270	5 000 m							
		ALS INOP	(1 239)	5 000 m							

* Timing Not authorized for defining MAPt.
* Circling Not authorized.

YEOSU/Yeosu (RKJY)
RNAV(GNSS) RWY 35
HOLDING PROCEDURE

AERONAUTICAL DATA TABULATION

Instrument Approach Procedure Coding Tables

RNAV(GNSS) RWY 35

Serial Number	Path Descriptor	Waypoint Identifier	Fly-over	Course/Track °M(°T)	Distance (NM)	Turn direction	Altitude (ft)	Speed (kt)	Coordinates	VPA/RDH	Navigation specification	Remarks
001	IF	SOONA	-	-	-	-	+4 000	-230	34°38'27.5"N 127°42'56.0"E	-	RNP APCH	IAF
002	TF	TOQUE	-	346(338.1)	3.0	-	+3 100	-230	34°41'14.7"N 127°41'34.5"E	-	RNP APCH	IF
003	TF	ANJAY	-	346(338.1)	4.8	-	+1 700	-	34°45'42.7"N 127°39'23.7"E	-	RNP APCH	FAF
004	TF	RW350	Y	346(338.1)	4.6	-	+1 270	-	34°50'00.53"N 127°37'17.70"E	-3.30/50	RNP APCH	MAPt
005	TF	JY505	-	346(338.0)	5.6	-	-	-	34°55'10.9"N 127°34'45.7"E	-	RNP APCH	-
006	TF	YEONA	Y	291(283.1)	8.3	-	-	-	34°57'03.8"N 127°24'52.1"E	-	RNP APCH	-
007	HM	YEONA	Y	310(302.8)	-	L	@5 000	-200	34°57'03.8"N 127°24'52.1"E	-	RNP APCH	1 min (Outbound timing)

HOLDING PROCEDURE

Holding Identification	Path Descriptor	Waypoint Identifier	Fly-over	Course/Track °M(°T)	Time (min)	Turn direction	Altitude (ft)	Speed (kt)	Coordinates	VPA/RDH	Navigation specification	Remarks
RNAV(GNSS) RWY 35	HM	SOONA	Y	346(338.5)	1	L	-4 000 +5 000	-200	34°38'27.5"N 127°42'56.0"E	-	RNAV 1	-

Change : Amended coordinate format.

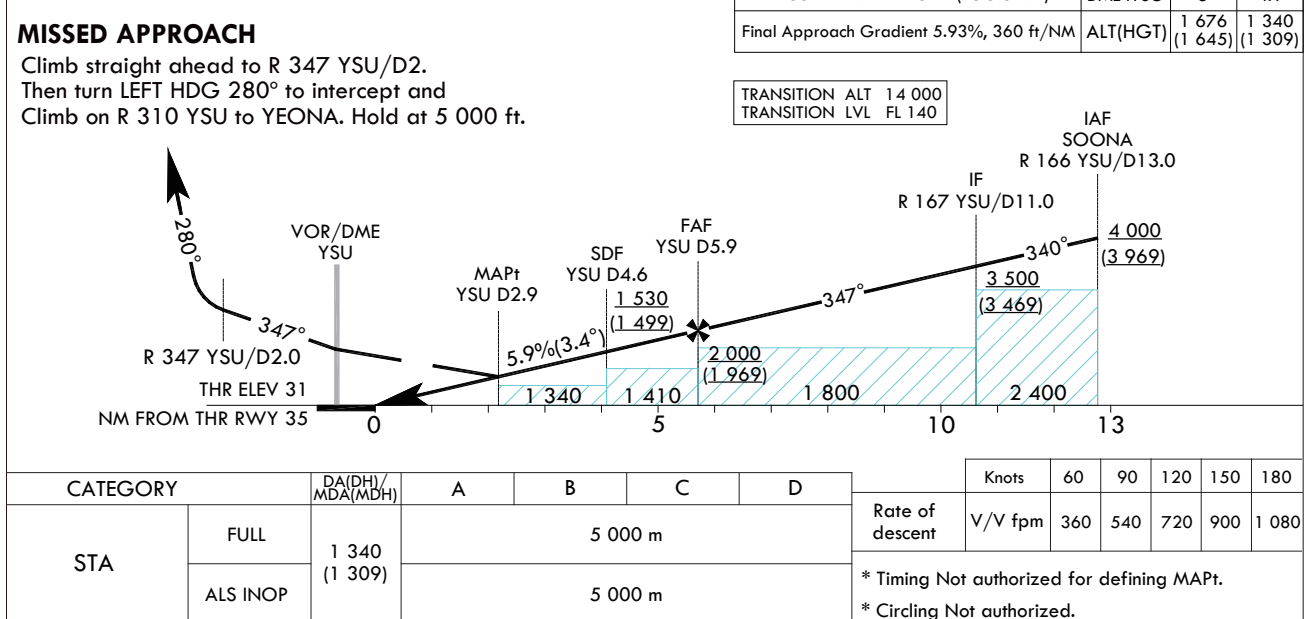
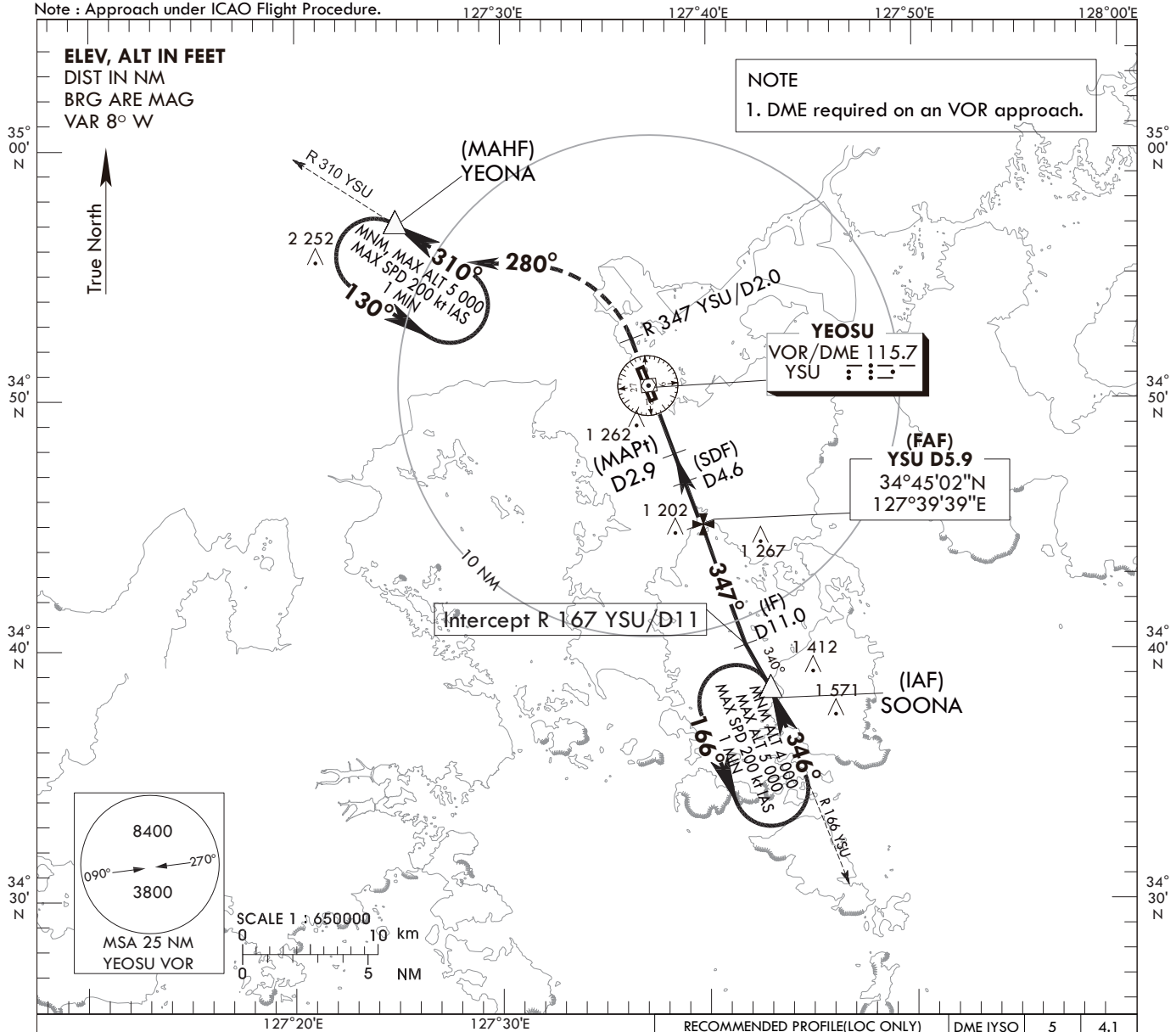
INSTRUMENT APPROACH CHART - ICAO

AERODROME ELEV 53 ft
HEIGHTS RELATED TO THR RWY 35-ELEV 31 ft

SACHEON	APP	135.4
YEOSU	TWR	122.5 240.9

YEOSU/Yeosu (RKJY)
VOR RWY 35

Note : Approach under ICAO Flight Procedure.



YEOSU/Yeosu (RKJY)
 VOR RWY 35

AERONAUTICAL DATA TABULATION

VOR Approach to RWY35 from SOONA		
Fix/point		Coordinates
SOONA(IAF)	- YSU R 165 /13.00 NM YSU	34°38'27.5"N 127°42'56.0"E
D11 YSU (IF)	- BRG 347.04°/11.00 NM YSU	34°40'15.1"N 127°41'49.0"E
D5.9 YSU (FAF)	- BRG 347.02°/5.90 NM YSU	34°45'02.2"N 127°39'38.9"E
D4.6 YSU (SDF)	- BRG 347.01°/4.60 NM YSU	34°46'15.4"N 127°39'05.8"E
D2.9 YSU (MAPt)	- BRG 347.01°/2.90 NM YSU	34°47'51.0"N 127°38'22.3"E
THR RWY 35		34°50'00.53"N 127°37'17.70"E
YSU VOR /DME		34°50'34.2"N 127°37'08.2"E
D2 YSU	- BRG 347.00°/2.00 NM YSU	34°52'26.8"N 127°36'17.0"E
YEONA	- BRG 278.30°/12.00 NM YSU	34°57'03.8"N 127°24'52.1"E

Change : Amended coordinate format.